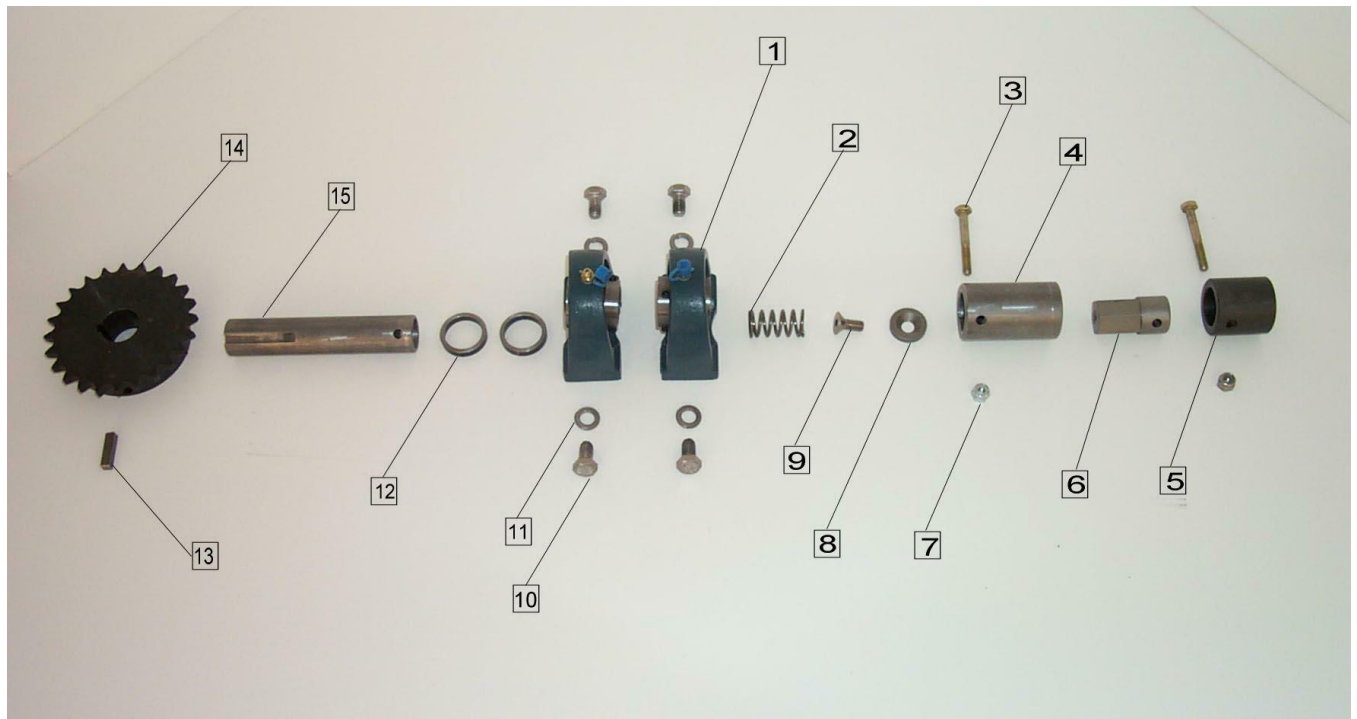
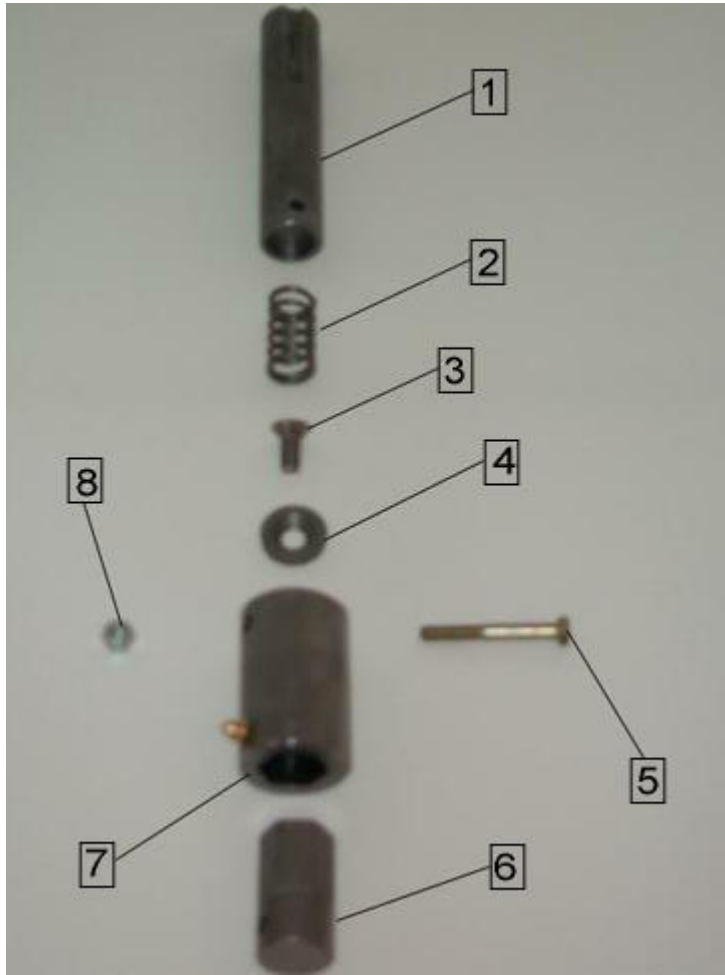


UPPER SPINNER SHAFT ASSEMBLY



<u>ITEM</u>	<u>PART #</u>	<u>QTY.</u>	<u>DESCRIPTION</u>
	ICE1124		UPPER SPINNER SHAFT ASSEMBLY
1	ICE2004	2	PILLOW BLOCK BEARING 1" BORE TAPPED BASE
2	ICE1154	1	SPRING, UPPER SPINNER SHAFT
3	ICE4031	2	1/4-20" x 2" HEX HEAD CAP SCREW,ZP
4	ICE1220	1	HEX COUPLER
5	ICE1034-2	1	SPINNER SHAFT COUPLER FEMALE END
6	ICE1211	1	HEX SHAFT
7	ICE6016	2	1/4" NYLON INSERT NUT
8	ICE5011	1	COUNTER SUNK WASHER
9	ICE4013	1	5/16" x 3/4" FLAT HEAD HEX SOCKET BOLT
10	ICE4020	4	3/8-16" x 3/4" HEX HEAD CAP SCREW, SS
11	ICE5007	4	3/8" LOCK WASHER
13	ICE7001	1	KEY 1/4" x 1/4" x 1"
14	ICE3004	1	24T SPROCKET 1" BORE
15	ICE1117	1	UPPER SPINNER SHAFT 1" OD x 5 7/8" LONG

SPRING COUPLER SHAFT ASSEMBLY



<u>ITEM</u>	<u>PART #</u>	<u>QTY.</u>	<u>DESCRIPTION</u>
	ICE1174		SPRING COUPLER SHAFT ASSEMBLY
1	ICE1117	1	UPPER SPINNER SHAFT 1" OD x 5 7/8"
2	ICE1154	1	SPRING, UPPER SPINNER SHAFT
3	ICE4013	1	5/16-18 x 3/4 FLAT HEAD HEX SOCKET BOLT
4	ICE5011	1	COUNTER SUNK WASHER
5	ICE4031	1	1/4-20 x 2 HEX HEAD CAP SCREW, ZP
6	ICE1211	1	HEX SHAFT
7	ICE1220	1	HEX COUPLER
8	ICE6016	1	1/4-20 NYLON INSERT NUT



ICE1126-41
CHAIN SPINNER #40 x 41 LINKS